

INTERIOR SCHOLARSHIP

AIT-Scholarship of the Sto Foundation

PRESS RELEASE

Hamburg, 31 July 2020

The *Interior Scholarship – the AIT-Scholarship of the Sto Foundation* has been awarded!

The *Interior Scholarship – the AIT-Scholarship of the Sto Foundation*, is awarded four times this year. During the jury session on 31 July 2020, one student each from the Gerrit Rietveld Academie, Amsterdam, the Netherlands, the Estonian Academy of Arts, Tallinn, Estonia the TU Delft, Delft, the Netherlands and the University of Architecture and Urbanism ION MINCU, Bucharest, Romania impressed the jurors. With a monthly subsidy of 500 Euros each to help cover the costs of living, the students are given the opportunity to fully dedicate themselves to their studies for a whole year.



1: Jury members of the 2020 Interior Scholarship (left to right: Uwe Koos, Hanna Moosbauer, Kristina Bacht, Ralf Pasel, Sabine Keggenhoff, Dorothee Maier, Peter Cheret), photo: GIULIANI | VON GIESE

The *Interior Scholarship – the AIT-Scholarship of the Sto Foundation* which is endowed with 24,000 Euros, was awarded for the tenth time in 2020. As in previous years, submissions arrived from all over Europe, this time involving 66 applicants from 17 countries. This year's winners are **Lauritz Bohne** (TU Delft, Delft, the Netherlands), **Catalina Dumitru** (University of Architecture and Urbanism ION MINCU, Bucharest, Romania), **Marie Jõgi** (Estonian Academy of Arts, Tallinn, Estonia) and **Floriane Libilb  h  ty** (Gerrit Rietveld Academie, Amsterdam, the Netherlands). During the jury session on 31 July 2020 at the AIT-ArchitekturSalon Hamburg, the jurors Sabine Keggenhoff

(KEGGENHOFF | PARTNER, Arnsberg-Neheim, Germany), Dorothee Maier (meierei Innenarchitektur | Design, Munich, Germany), Hanna Moosbauer (Scholarship holder of the Interior Scholarship 2011/12, Linz, Austria), Ralf Pasel (Pasel Künzel Architects, CODE | Construction + Design, Technische Universität Berlin, Berlin, Germany), Peter Cheret (Representative of Sto Foundation, Cheret Bozic Architekten BDA DWB and University Stuttgart, Stuttgart, Germany) and Uwe Koos (chairman of the Sto Foundation council, Stühlingen, Germany) assessed and discussed both the quality of the submitted student projects as well as the creative designs of this year's impromptu assignment, which was an assessment criterion for the sixth time.

This year the students had been asked to create a space themed TO HAVE OR TO BE? - NEW SPACES OF THE SHARING COMMUNITY. In many visionary approaches to social coexistence, sharing replaces the idea of owning. On swap markets you can exchange or borrow, coworking spaces provide peer-to-peer workplaces, you get to know the world as a couch surfer, the garden cooperative supplies you with organic vegetables. The theme should have discussed the following questions: What new public places are created by this? What needs do these new places have to meet? To what extent does this shift the relationship between public and private space? How does this affect our approach to interior spaces? The different aspects of the sharing community were to be examined and a spatial idea/attitude/interpretation of it was to be developed. The personal idea was to be illustrated in the form of individually selected, concept-supporting presentation techniques, such as visualizations, model photos, collages, drawings, sketches, films, collages and so on.

After an assessment procedure with three rounds and extensive discussion, the jury unanimously determined the winners, who primarily stood out due to their individual attitudes and creative thinking. The available prize money of 24,000 Euros was divided between the four students from Estonia, France, Germany and Romania who can now happily look forward to a monthly allowance of 500 Euros each.

The scholarships are funded by the Sto Foundation, which regards "the education of the young generation [...] as an investment in the future of our society" and wants to afford the winners a carefree study period of one year. For this reason, Sto Foundation supports young people in their academic education. As an overriding purpose, the Sto Foundation takes up the guiding theme of "Aware Constructing" of Sto SE & Co. KGaA and aims at global technology leadership in the industry to achieve a people-friendly and sustainable design of built living environments.

"This year the AIT-Scholarship of Sto Foundation was awarded for the tenth time in a row. Despite generally sensitive circumstances at the time of the pandemic, there was once again an extremely high level of participation. The jury had to assess 66 applications in total, over half of which came from other European countries and were submitted by students of 25 different nationalities Europe-wide. Once again, the portfolios submitted showed an extraordinary variety of positions, not least due to the different focal points in interior design teaching. A very important part of the submission was finding a solution to the impromptu task - especially where the students took the opportunity to question common conventions, to surprise themselves and others and to arrive at independent solutions.

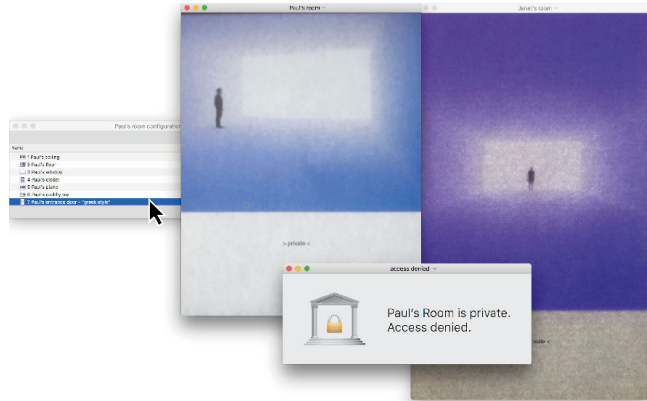
On behalf of the Sto Foundation and also on behalf of the jury, I would like to thank all the applicants and sincerely congratulate the four scholarship holders."

Professor Peter Cheret, Board of Trustees Architecture of Sto Foundation

The scholars of the Interior Scholarship 2020/2021

Lauritz Bohne

TU Delft, Delft, The Netherlands



2: Impromptu design "my_room" by Lauritz Bohne

The jury's verdict

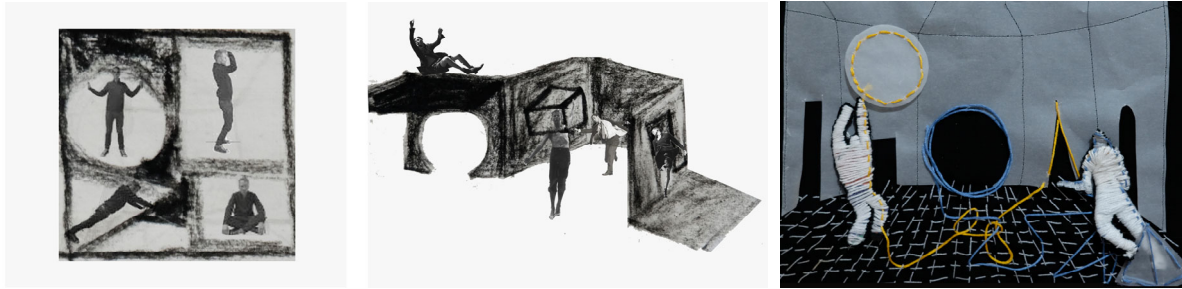
I have (space), therefore I am?

In this work, the social examination of private property and (interior) space is done in a playful, theoretical and graphic way that makes you want more.

The impromptu design My-Room, as a plea for the right to private space and the role of interior design, which Lauritz concedes to each individual user, shows his critical position. His submission impresses with a multifaceted examination of space, art and material in different scales - from furniture to flexible room configurations and precise layout of paths. In addition to the classic interior design for a new kitchen concept, the project for the Japanese pavilion demonstrates the joy of experimentation, of the performative, artistic aspect of interior design. People visiting the pavilion ascend to the exhibition space and thus experience the staged space in a special way. The reference to architectural theoretical references and places, the play with proportions and the implementation up to the 1:1 model show an intensive occupation with the topic.

Catalina Dumitru

University of Architecture and Urbanism ION MINCU, Bucharest, Romania



3: Impromptu design by Catalina Dumitru

The jury's verdict

Catalina Dumitru's projects are characterised in particular by their conceptual sharpness and an enormous wealth of suggestive power. The versatile works are of the highest level throughout and manage the leap to unite spatial thinking with spheres rich in character. With her designs Catalina Dumitru succeeds in taking an independent and meaningful position, which enables her to compose programmatic complexity and the most diverse scales to form new worlds in a seemingly playful way. In doing so, her creative skills are varied, surprise with new aspects and show a great willingness to experiment. The representations of the designs are very individually adapted to the specific design approaches and impressively demonstrate Catalina Dumitru's talent and capabilities. We are looking forward to seeing more of her work in the future!

Marie Jõgi
Estonian Academy of Arts, Tallinn, Estonia



4: Impromptu design "Let's do something together" by Marie Jõgi

The jury's verdict

"Let's do something together" – A sharing community not only implies sharing space, time and things, it can also share joy! Marie Jõgi captivates with her playful experiment of the Mattress Community. The mundane bed mattresses of a living community are stacked up into a house of cards by the roommates; they are converted and generate a real happening as a flexible space. Stacked and tilted, they create a new interior space that establishes unusual and amusing relationships between the flatmates. With the simple 'readymade' of the mattress, they initiate the real interaction of space and people, in the best sense of interior design!

Floriane Libilbéhéty
Gerrit Rietveld Academie, Amsterdam, The Netherlands



5: Design "From a wall to a home" by Floriane Libilbéhéty

The jury's verdict

The overall presentation of Floriane and with it the student portfolio she developed so far is very exceptional throughout. We as the jury would like to expressly congratulate her on this. The recognisable creative and conceptual interior design achievement is a source of great pleasure and inspiration. It suggests a 'creative mind of her own'; a mind that questions issues beyond the usual, a mind that shows courage, individuality, openness and joy of experimentation in and for the room. It is precisely these qualities that need to be promoted, and this is exactly where the support takes effect to create creative freedom in the future. Congratulations!

Jury of the Interior Scholarship 2020/2021

Sabine Keggenhoff

KEGGENHOFF | PARTNER and PBSA Düsseldorf, Arnsberg, Germany

Sabine Keggenhoff was trained as a construction draughtswoman and studied (interior) architecture at the Detmold School of Architecture and Interior Architecture, Ostwestfalen-Lippe University of Applied Sciences. Together with Michael Than she founded the office KEGGENHOFF | PARTNER in 2001, a branch office in Palma de Mallorca/Spain was opened in 2009. From 2007 to 2009 she held a teaching assignment at the Interior Design Faculty of Detmold School of Architecture and Interior Architecture, Ostwestfalen-Lippe University of Applied Sciences. Her teaching assignment at the Architecture Faculty at the PBSA - Peter Behrens School of Architecture, Düsseldorf University of Applied Sciences from 2013 to 2014 was followed by a professorship at the same faculty from 2015 to 2019.

Dorothee Maier

meierei Innenarchitektur | Design, Munich, Germany

After training as a clothing tailor, Dorothee Maier studied interior design at the Rosenheim University of Applied Sciences. During her stays abroad in the USA and Italy as well as stations in the renowned offices Schmidhuber + Partner and Studio Matteo Thun she gained valuable experience in interior design and in the broad field of design. In 2003 she founded the office meierei Innenarchitektur | Design in Munich together with her husband Andreas Utzmeier. Her portfolio ranges from exhibition design and hotel concepts to the planning and design of retail projects and interior design. In addition to her practical work as an interior designer, Dorothee Maier was an active member of the board of directors of the bdia regional association of Bavaria from 2015 to 2018 and since 2015 she has been a member of the Bavarian Chamber of Architects.

Hanna Moosbauer

Scholarship holder of the Interior Scholarship 2011/12, Linz, Austria

After attending the Höhere Bundeslehranstalt für künstlerische Gestaltung, Hanna Moosbauer studied industrial design at the University of Applied Arts in Vienna, where she graduated with distinction. She then studied architecture at the TU Vienna, where she also received an award for her diploma thesis. Since 2015 Hanna Moosbauer has been working in the Riepl Riepl architectural office in Linz and is also an external university lecturer at the Institute for Building Design at the TU Vienna. She regularly takes part in competitions and exhibitions.

Prof. Ralf Pasel

Pasel Künzel Architects, CODE | Construction + Design, Technische Universität Berlin, Berlin, Germany

Ralf Pasel first studied civil engineering at the TU Darmstadt and then graduated in architecture at the TU Dresden. During his studies of architecture he was drawn to Paris and Liverpool in the course of two stays abroad. Ralf Pasel is a founding partner of pasel.künzel architects Rotterdam as well as Pasel-K architects Berlin and has been working for many years on experimental forms of living and building in an international context. The office works closely at the interface between research, practice and teaching. Since 2012, Ralf Pasel has been university professor for design and building construction at the Institute of Architecture at the TU Berlin of Berlin. From 2015 to 2019 he was director of the Faculty of Architecture there. Prior to that, he held several international guest professorships, e.g. at the Universidad Catolica de Santiago de Chile and the Rotterdam Academy of Architecture and Urban Design.

Prof. Peter Cheret

Representative of Sto Foundation and Cheret Bozic Architekten BDA DWB, Stuttgart, Germany

Following his architectural studies at Konstanz University of Applied Sciences and Stuttgart University, Peter Cheret initially worked as a freelance architect before founding the office Cheret und Englert in 1988. In 1993, he established the office Cheret Bozic Architekten. After teaching activities in 'Introduction to Design' at Stuttgart University and his visiting professorship at Trier University of Applied Sciences, he was offered a professorship at Stuttgart University at the Faculty of Building Construction and Design in 1995. Additionally, he is a member of the board of trustees of the Sto Foundation.

Uwe Koos

Chairman of the board of Sto Foundation, Stühlingen, Germany

After his apprenticeship as a master painter and varnisher, he studied to become a colour designer. A study visit brought Uwe Koos to the University of Minnesota, USA. After working as a freelancer in the field of colour and design, Uwe Koos established the colour design department for the Sto Company with studios in Germany, Europe, North America and Asia. For more than 30 years, he was responsible for the positioning of strategic design and international marketing communication at Sto AG. Since the establishment of Sto Foundation in 2005, Uwe Koos has been Chairman of the Sto Foundation Council.

Kristina Bacht

Curator AIT-ArchitekturSalons, Publishing Director AIT-Dialog, Hamburg, Germany

Kristina Bacht studied architecture and urban planning at Technische Universiteit Delft/Netherlands and Universidad Tecnica Federico Santa Maria in Valparaiso/Chile. During and after her studies, she worked with various international architecture offices in Germany, the USA and the Netherlands. Since 2005, Kristina Bacht has been employed with AIT-Dialog with a work focus on architecture communication. In 2009, she developed and established the AIT ArchitekturSalons with venues in Hamburg, Cologne and Munich. As head curator of the galleries she organises exhibitions of internationally renowned architects and is responsible for numerous international architecture congresses and symposia, competitions, workshops, focus groups as well as editorial events, architecture magazines and publications. From 2009 to 2013, she acted as deputy publishing director, and became publishing director in 2013.

Images (from top to bottom)

- 1: Jury members of the 2020 Interior Scholarship (left to right: Uwe Koos, Hanna Moosbauer, Kristina Bacht, Ralf Pasel, Sabine Keggenhoff, Dorothee Maier, Peter Cheret), photo: GIULIANI | VON GIESE
- 2: Impromptu design "my_room" by Lauritz Bohne
- 3: Impromptu design by Catalina Dumitru
- 4: Impromptu design "Let's do something together" by Marie Jögi
- 5: Design "From a wall to a home" by Floriane Libilbéhéty

Picture credits

Free use for press purposes when mentioning 'AIT-Dialog' and the photographer GIULIANI | VON GIESE as well as the name of the respective scholar with the impromptu designs.

Contact

Ir. Kristina Bacht (MSc Arch)
Curator | Director AIT-ArchitekturSalons
Publishing Director
Gesellschaft für Knowhow-Transfer in Architektur und Bauwesen mbH
Bei den Mühren 70 | 20457 Hamburg
Fon: +49 (0)40 / 70 70 898-11
Fax: +49 (0)40 / 70 70 898-20
E-Mail: kbacht@ait-online.de

stipendium@ait-architektursalon.de
www.ait-architektursalon.de/stipendium